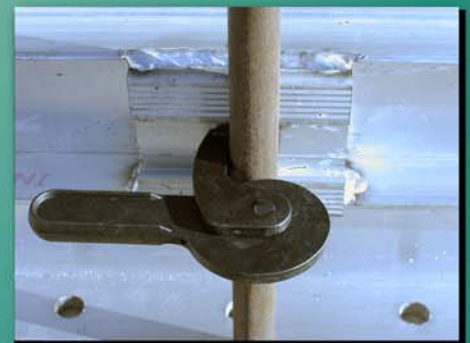
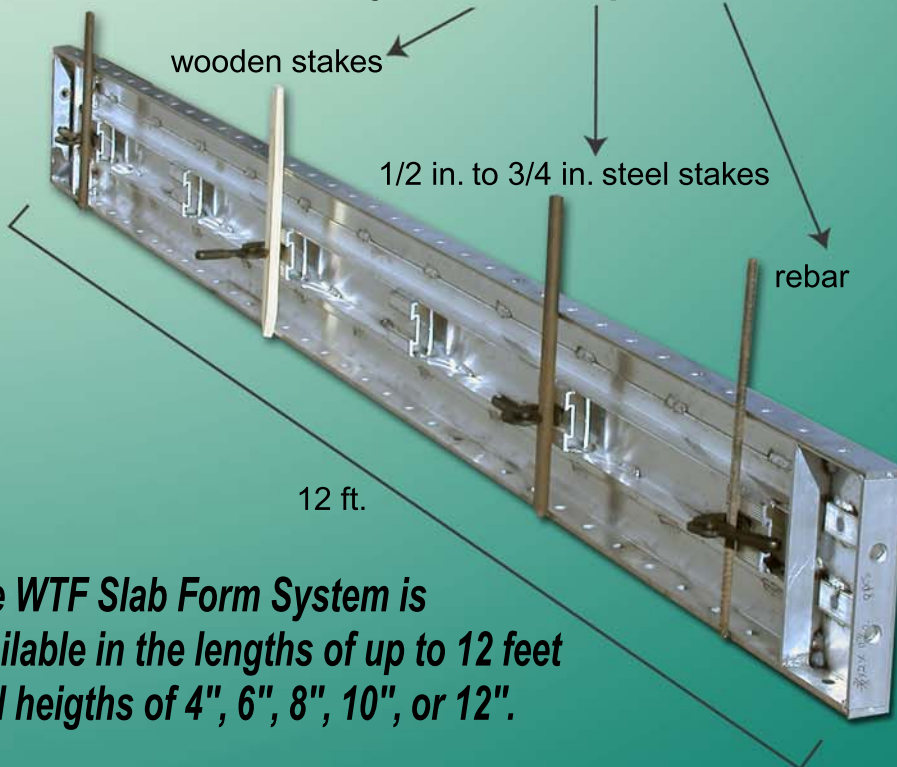


PRODUCT IN THE SPOTLIGHT

WTF SLAB/FOOTING FORM

This versatile concrete slab form is made of lightweight high strength aluminum. This allows for a long lasting, easily portable form that is simple to assemble. In slab uses a simple windmill method is used to create outside corners. Inside and outside corners forms are available for more complex slab applications as well as footing uses.

Adjustable clamps for use with:



Standard slab forms have a smooth face, but the following are also available:

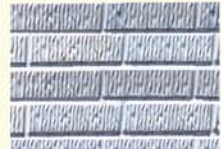
Smooth Brick



Textured Brick



VertiBrick



The WTF Slab Form System is available in the lengths of up to 12 feet and heights of 4", 6", 8", 10", or 12".

- Lightweight Aluminum**
- Easily assembled**
- Corner forms optional**
- Smooth and Brick Face**



Designing concrete forms that meet your needs - not ours.